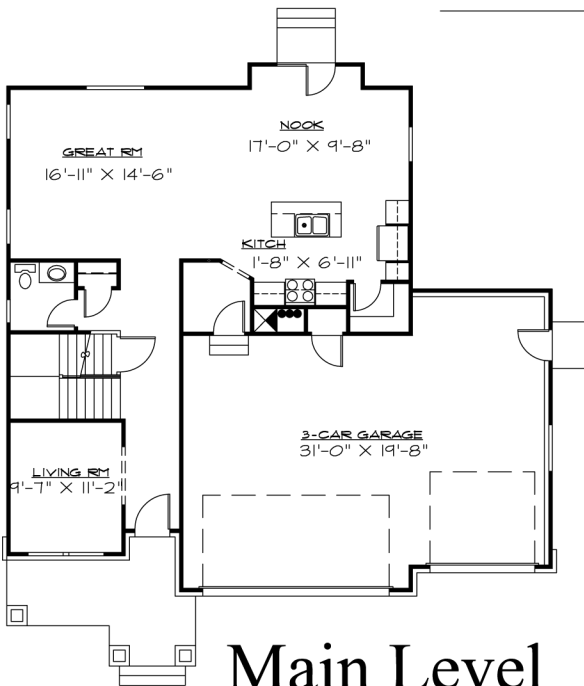




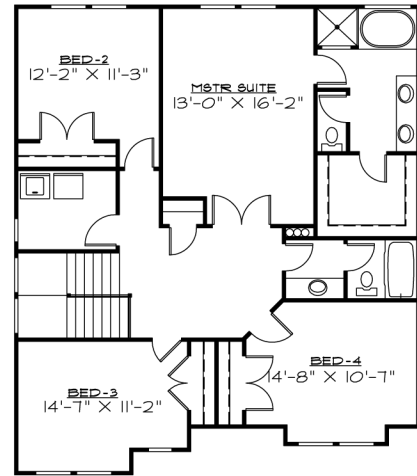
Front Elevation

Stirling



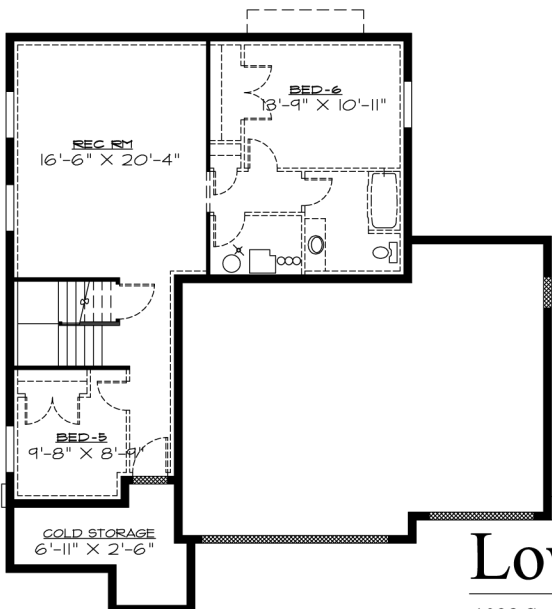
Main Level

1042 Sq. Feet Main Level



Upper Level

1258 Sq. Feet Upper Level



Lower Level

1028 Sq. Feet Lower Level



OVERALL DIMENSIONS 46'-10" X 43'-5"  
 2300 FINISHED SQ. FEET  
 3328 TOTAL SQ. FEET  
 ROOM SIZES AND SQ. FOOTAGES SHOWN ARE APPROXIMATE.  
 PLANS, FEATURES AND PRICING SUBJECT TO CHANGE WITHOUT NOTICE  
 RENDERINGS ARE FOR ILLUSTRATION PURPOSES ONLY