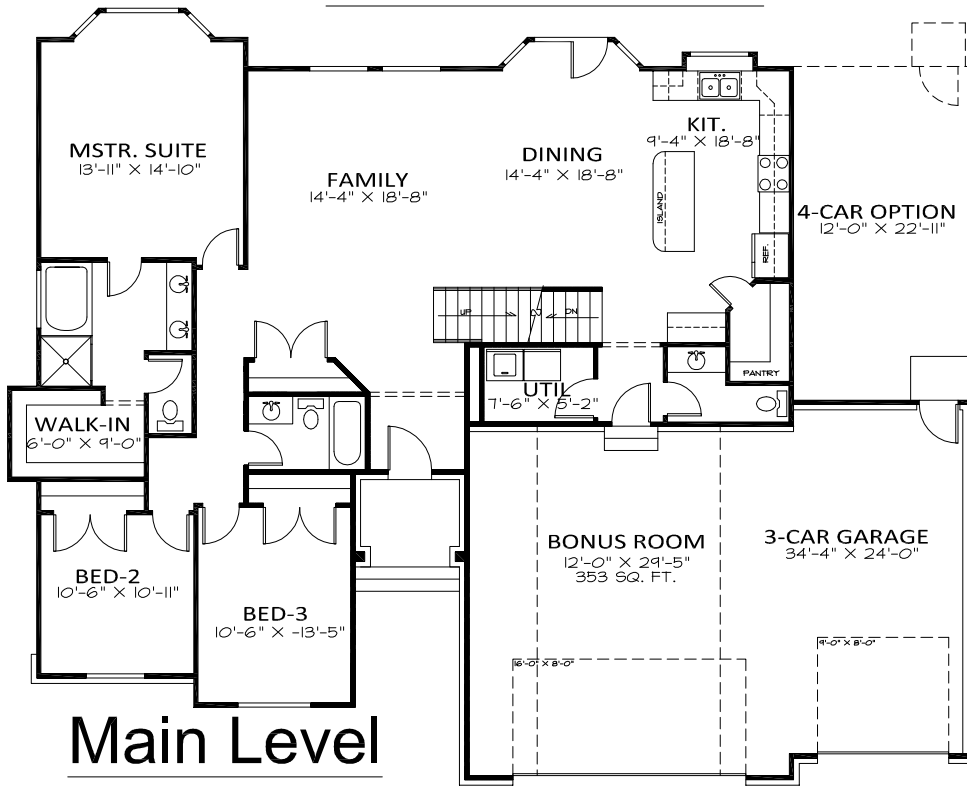


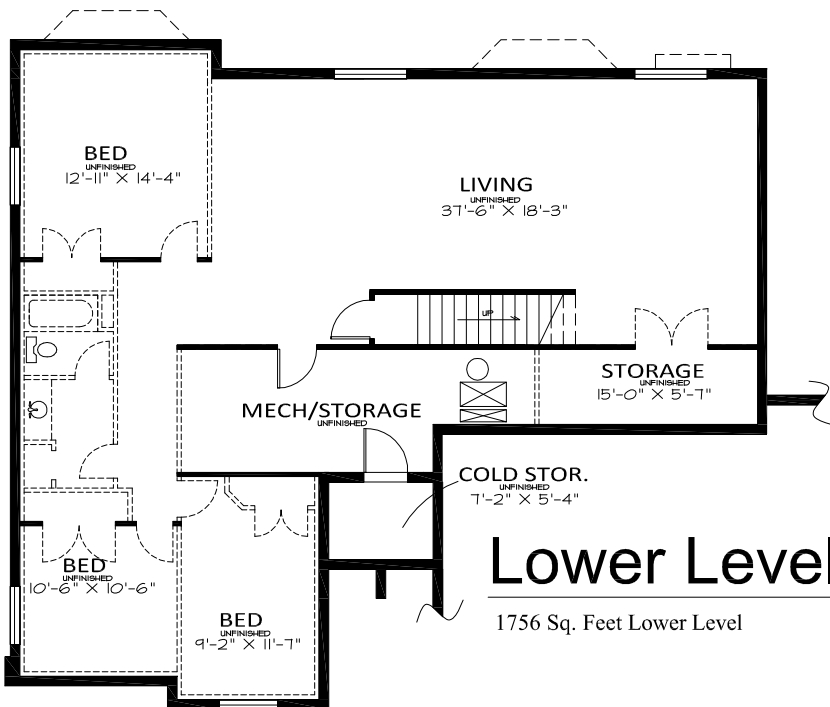


Front Elevation



Main Level

1777 Sq. Feet Main Level



Lower Level

1756 Sq. Feet Lower Level



OVERALL DIMENSIONS 67'-4" X 51'-0"
 2130 FINISHED SQ. FEET
 3886 TOTAL SQ. FEET
 ROOM SIZES AND SQ. FOOTAGES SHOWN ARE APPROXIMATE
 PLANS, FEATURES AND PRICING SUBJECT TO CHANGE WITHOUT NOTICE
 RENDERINGS ARE FOR ILLUSTRATION PURPOSES ONLY

Manchester
 (w/ Bonus)