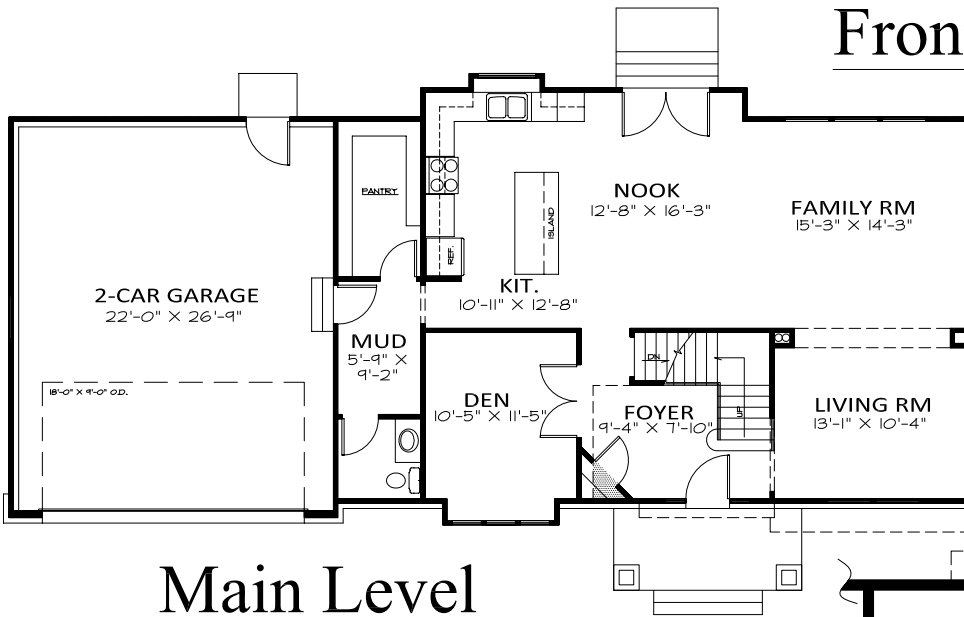




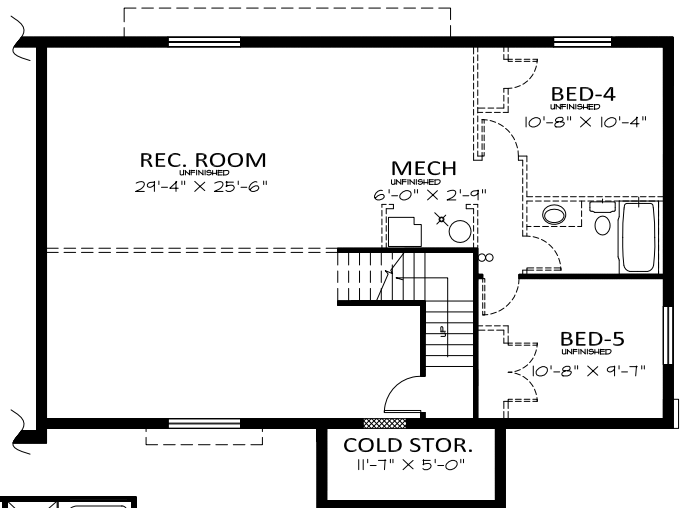
Front Elevation

Newcastle



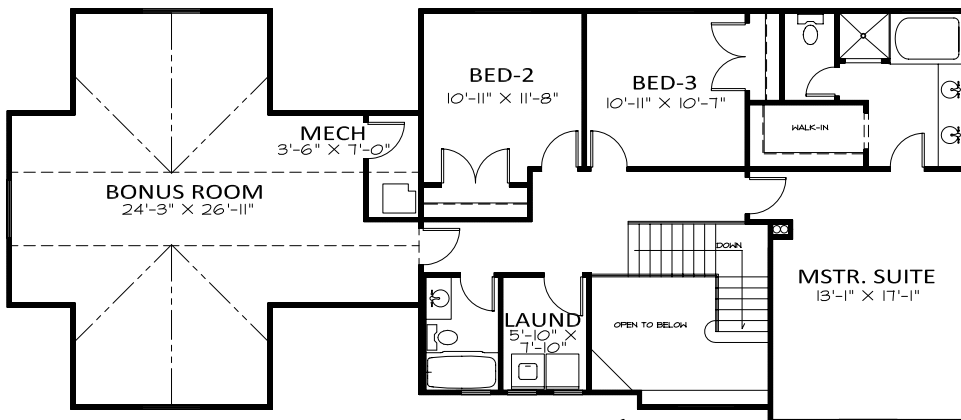
Main Level

1215 Sq. Feet Main Level



Lower Level

1139 Sq. Feet Lower Level



Upper Level

893 Sq. Feet Upper Level
575 Sq. Feet Bonus Room



OVER ALL DIMENSIONS 66'-0" X 31'-0"
2683 FINISHED SQ. FEET
3822 TOTAL SQ. FEET

ROOM SIZES AND SQ. FOOTAGES SHOWN ARE APPROXIMATE
PLANS, FEATURES AND PRICING SUBJECT TO CHANGE WITHOUT NOTICE
RENDERINGS ARE FOR ILLUSTRATION PURPOSES ONLY